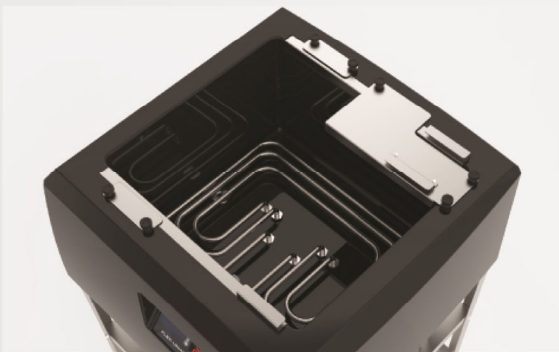
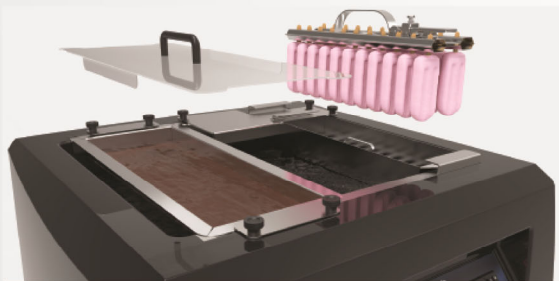


FLEX UNMOLD TANK

First table top unmold machine with chocolate dipping tank



1. Flexibility: can be used with its stainless steel mounting or placed directly on a workbench or table top.
2. Safety system for resistance burn prevention.
3. Easy to clean.
4. Modern fiberglass design.
5. Casters for easy moving even when filled.
6. Drain system for easy removal of fluid.
7. Bottom tray for storing molds.
8. Automatic temperature controller. You can set the desired unmolding temperature.
9. Unmolds the ice pops and allows for chocolate dipping.
10. The chocolate dipping tank can also be used to cover sundaes other products.



Model	Flex Unmold Tank
Rated voltage	220 V
Rated power	2,8 kW
Rated current	13 A
Network type	Single Phase or Biphasic
Network frequency	60 Hz
Useful tank volume	38 L
Maximum unmoulding capacity	Up to 900 ice pops / hour
Maximum chocolate volume	Up to 180 Kg / hour
Type of control	Automatic
Dimensional (W x H x D)	0,69m x 0,98 m x 0,65 m
Dimensional crate (W x H x D)	0,77 m x 0,80 m x 0,70 m
Net weight	25 kg
Crate weight	55 kg